



TO VIEW THE INSTALLATION VIDEO, PLEASE VISIT OUR WEBSITE AT THE FOLLOWING ADDRESS : www.naturen.pro/en/our-solutions/tri-uno-bin/

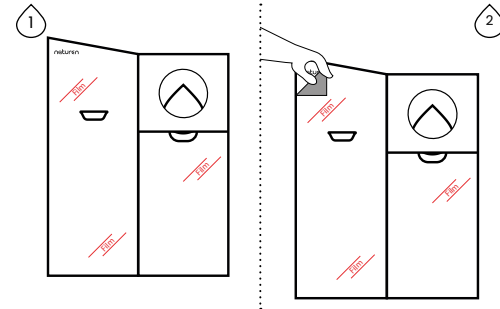
1 RECEIVE THE GARBAGE BIN

OUR GARBAGE BINS ARE DELIVERED FOLDED IN FLAT BOXES, REDUCING CO2 EMISSIONS DURING TRANSPORT.



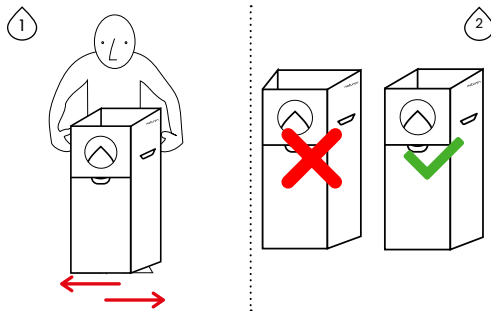
2 REMOVE THE PROTECTION FILM

AFTER TAKING THE GARBAGE BIN OUT OF THE BOX AND LAY IT FLAT ON THE GROUND, REMOVE THE PROTECTION FILM FROM THE GARBAGE BIN.



3 ASSEMBLE THE GARBAGE BIN

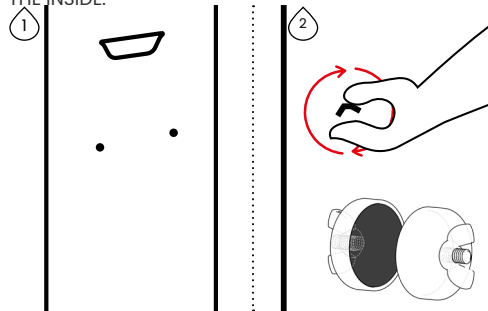
UNFALT THE GARBAGE BIN SO THAT IT'S RECTANGULAR.



4 INSTALLATION OF THE MAGNETS (OPTIONAL)

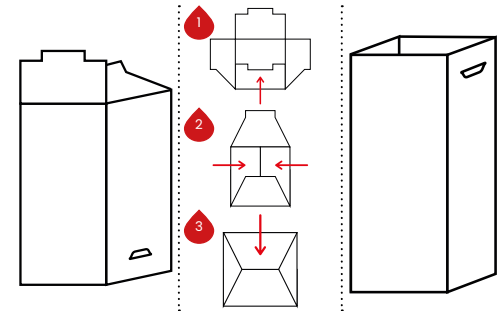
MAGNETS FOR ATTACHING GARBAGE CANS TO CREATE A SET, ARE AVAILABLE AS AN OPTION AND SOLD SEPARATELY FOR 20L, 60L AND 100L MODELS.

PLACE THE MAGNET ON THE OUTSIDE OF THE GARBAGE BIN, USE THE WING NUTS TO FIX THE MAGNETS FROM THE INSIDE.



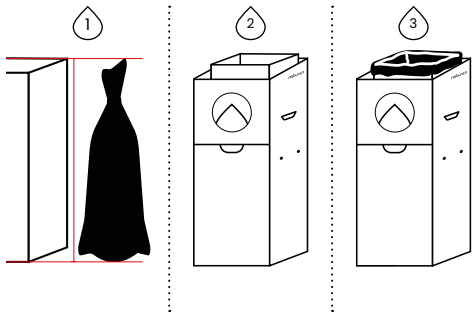
5 ASSEMBLE THE INNER BIN FOR BAGS

ASSEMBLE THE INNER BIN USING THE TABS ON THE BOTTOM OF THE BIN.

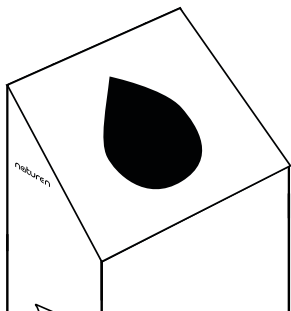


6**INSERT THE WASTE BAG**

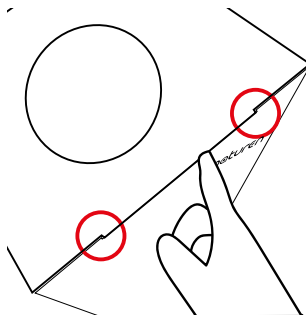
- 1 - CHOOSE A BAG ADAPTED TO THE SIZE OF THE INNER BIN (THE BAG MUST BE LARGE ENOUGH TO TOUCH THE BOTTOM OF THE BIN)
- 2 - PLACE THE BIN INSIDE THE TRIUNO
- 3 - PLACE THE BAG INSIDE THE BIN

**8****CLOSE THE SECOND COVER**

CLOSE THE SECOND COVER OVER THE FIRST TO FINISH ASSEMBLING THE GARBAGE BIN.

**7****CLOSE THE FIRST COVER**

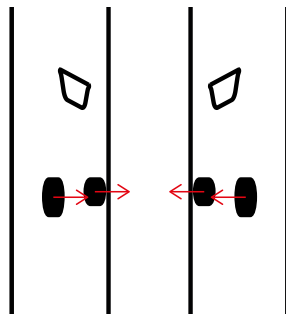
CLOSE THE FIRST CAP, MAKING SURE TO PLACE IT ACCORDING TO THE CUT-OUTS OF THE GARBAGE BIN IN THE NOTCHES ON THE SIDES.



CAUTION !
STEP 3 MUST BE
VALIDATED TO
CLOSE THE FIRST
COVER CORRECTLY.

9**SET ASSEMBLY**

ONCE ALL THE GARBAGE BINS ARE ASSEMBLED, A SET OF BINS CAN BE CREATED ISLAND USING THE OPTIONAL MAGNETS ON EACH GARBAGE BIN.

**IMPORTANT**

FOR INDOOR USE ONLY.

2-YEAR WARRANTY.
IN THE EVENT OF ABNORMAL WEAR AND TEAR (MANUFACTURING DEFECT), IF THE PRODUCT CANNOT BE REMOTELY SERVICED, IT WILL BE REPLACED.

ANY DETERIORATION IS NOT COVERED BY THE PRODUCT WARRANTY.

ON INSTALLATION: HANDLE THE GARBAGE CAN OFF THE GROUND TO AVOID SHOCKS.....

ONCE DEPLOYED, DO NOT MOVE THE GARBAGE CAN OTHER THAN BY LIFTING IT BY THE TWO HANDLES ON THE SIDES.

DO NOT DROP THE GARBAGE CAN ON THE FLOOR. ANY IMPACT COULD DAMAGE THE DEVICE.

THE GARBAGE CAN MUST BE HANDLED WITH GLOVES (EMPTYING THE BAG AND PLACING IT IN THE INNER BIN).

GARBAGE BAGS MUST BE ADAPTED TO THE SIZE OF THE INNER BINS. IMPERATIVE: THE HEIGHT OF THE GARBAGE CAN LINER MUST BE GREATER THAN THE HEIGHT OF THE INNER BIN.

ANY OTHER USE OF THE GARBAGE CAN IS OUTSIDE THE SCOPE OF NORMAL USE AND MAY DAMAGE THE DEVICE.

FOR MORE INFORMATION ON OUR PRODUCTS, PLEASE REFER TO THE NATUREN.PRO WEBSITE AND CONSULT THE GENERAL TERMS AND CONDITIONS.

NATUREN

47 CHEMIN DU VIEUX CHÊNE
38240 MEYLAN FRANCE

WWW.NATUREN.PRO
CONTACT@NATUREN-CONCEPT.COM
+33 (0)4 76 42 07 81